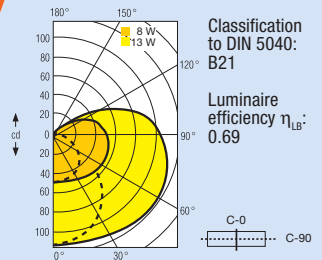
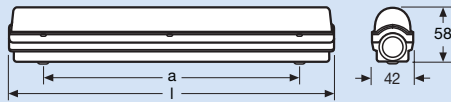
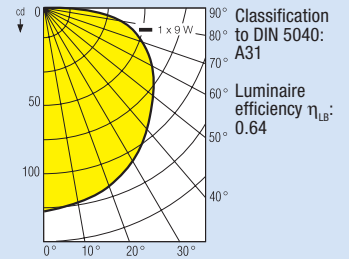
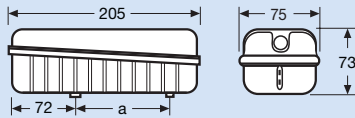


# LUMILUX BRIK® EL OSRAM DULUX BRIK®



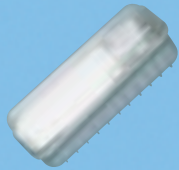
## LUMILUX BRIK® EL

Type	Product no. GREY	Prod. ref.	SP	l [mm]	a [mm]
8 W	4050300440880	72181	4	330	260
13 W	4050300440903	72185	4	560	400



## OSRAM DULUX BRIK®

Type	Product no. GREY	Product no. BLACK	Prod. ref.	SP	a [mm]
9 W	4050300315966	4050300315980	73036	4	102



## Description and features

The LUMILUX BRIK® EL batten luminaire and the OSRAM DULUX BRIK® compact luminaire are energy-saving damp-proof luminaires with a protective transparent cover for fixed connection indoors and out.

### LUMILUX BRIK® EL

- Slim splash-proof wall and ceiling batten luminaire for damp locations
- With electronic control gear
- With prismatic lamp cover for soft glare-free light
- For fixed connection
- Can be through-wired to create strip lighting

### OSRAM DULUX BRIK®

- Particularly compact splash-proof complete luminaire for indoors and out
- For fixed connection
- Lamp cover with special diffuser for pleasant glare-free light

## Technical data and equipment

### LUMILUX BRIK® EL

- Equipped with LUMILUX® L 8 W or 13 W/21-840 lamp
- Mains voltage: 230 V/50-60 Hz
- Dust-proof and splash-proof IP54
- 
- Colour: grey

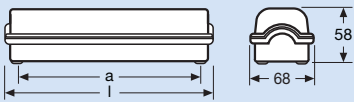
### OSRAM DULUX BRIK®

- Equipped with OSRAM DULUX® S 9 W/21-840 lamp
- Mains voltage: 230 V/50 Hz
- Splash-proof IP44
- 
- Colour: grey, black



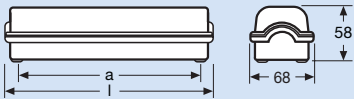
# OSRAM DULUX BRIK® EL

## OSRAM DULUX BRIK® EL *SENSOR*



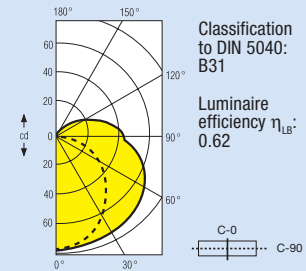
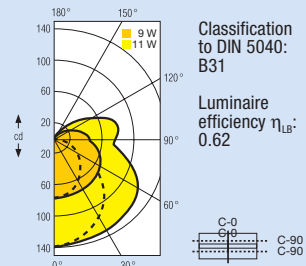
### OSRAM DULUX BRIK® EL

Type	Product no. GREY	Prod. ref.	SP	l [mm]	a [mm]
9 W	4050300440927	74121	4	224	200
11 W	4050300440941	74125	4	294	270



### OSRAM DULUX BRIK® EL *SENSOR*

Type	Product no. GREY	Prod. ref.	SP	l [mm]	a [mm]
9 W	4050300440965	74121-75	4	224	200



## Description and features

OSRAM DULUX BRIK® EL and EL *SENSOR* are energy and space-saving compact luminaires for damp locations with a transparent cover to protect against, dust, splashes and water.

- Compact splash-proof lighting systems for indoors and out
- Fully electronic operation with OSRAM DULUX-TRONIC® ECG with integrated and integrated lamp holder
- With prismatic lamp cover
- For fixed connection
- Can be through-wired to create strip lighting
- OSRAM DULUX BRIK® EL *SENSOR* greater economy and comfort thanks to built-in sensor-controlled simmer switch: automatically switches on and off according to the amount of available daylight

## Technical data and equipment

- Equipped with OSRAM DULUX® S/E 21-840 lamp
- Mains voltage: 230 V/50-60 Hz
- Dust-proof and splash-proof IP54
- 
- Colour: grey

